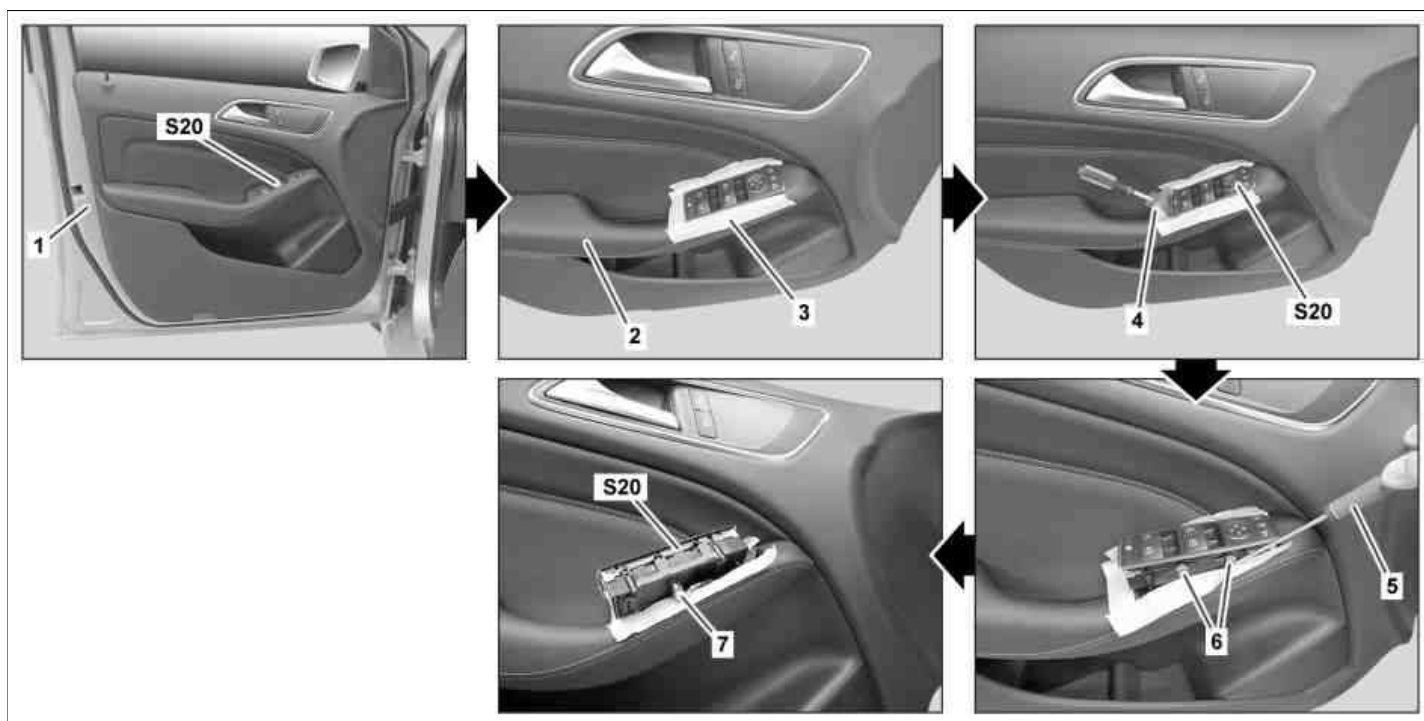


**MODEL** 117, 156, 166, 176, 204.3, 212 as of 3/1/11, 218, 231, 242, 246, 292

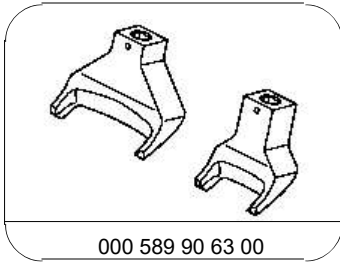


P72.29-2749-09

**Shown on MODEL 246**

- |   |               |   |              |     |   |
|---|---------------|---|--------------|-----|---|
| 1 | Front door    | 4 | Clip remover | 7   | Electrical connector  |
| 2 | Armrest       | 5 | Screwdriver  | S20 | Driver-side power window and outside mirror adjustment switch group |
| 3 | Adhesive foil | 6 | Catch hook   |     |   |

	Remove		
1	Directly attach adhesive foil (3) on driver-side outside mirror adjustment power window switch group (S20)		
2	Unclip driver-side outside mirror adjustment power window switch group (S20) from armrest (2) on front door (1) using clip remover (4)	Clip remover	*000589906300
3	Release catch hooks (6) on driver-side outside mirror adjustment power window switch group (S20) with suitable screwdriver (5) and remove from armrest (2) until electrical connector is accessible (7)		
4	Disconnect electrical connector (7) and remove driver-side outside mirror adjustment power window switch group (S20)		
5	Remove adhesive foil (3)		
	Install		
6	Connect electrical connector (7) on driver side power window and outside mirror adjustment switch group (S20)		
7	Clip driver-side outside mirror adjustment power window switch group (S20) into armrest (2)	The driver-side outside mirror adjustment power window switch group (S20) should arrest perceptively in the armrest (2).	
8	Check adjustments for proper function		



Clip remover