



EPC Brief Instructions



Mercedes-Benz

EPC table of contents

We reserve the right to make changes to the software not reflected in the statements and illustrations contained in these Brief Instructions. Reprinting, translation and reproduction of this publication, in whole or in part, are not authorized without written permission.

Last updated: 09/2010

Software: EPC Version 1.25.0.2

Daimler AG

GSP/OI

D-70546 Stuttgart

<http://aftersales.mercedes-benz.com>

Order no.: 6516 4818 02

Printed in Federal Republic of Germany /

Imprimé en République fédérale d'Allemagne

Welcome to EPC	1
EPC user interface	2
Getting started with EPC	3
Important functions in the picture window	4
Important functions in the parts list	5
Important functions in the shopping list	6
Datacard	7
Menu bar	8
Search	9
Filter	10
Setup, Write feedback	11
Online help, FAQ, "What's New", "Tips and Tricks"	12
Exit EPC	13

This Brief Instructions will assist you when working with EPC for the first time.

Regardless of whether you are a new or experienced user, these Brief Instructions will accompany you as you take your first steps.

The chapter "Getting started with EPC" uses practical examples to guide you step-by-step through the basic functions of EPC. The step-by-step instructions are marked with **1**, **2**, etc.

In the chapters that follow this, you can familiarize yourself with further EPC functions.

This information is marked with **A**, **B**, etc.

If you have further questions that are not covered in these Brief Instructions, EPC also contains extensive online Help notes.

Welcome to EPC

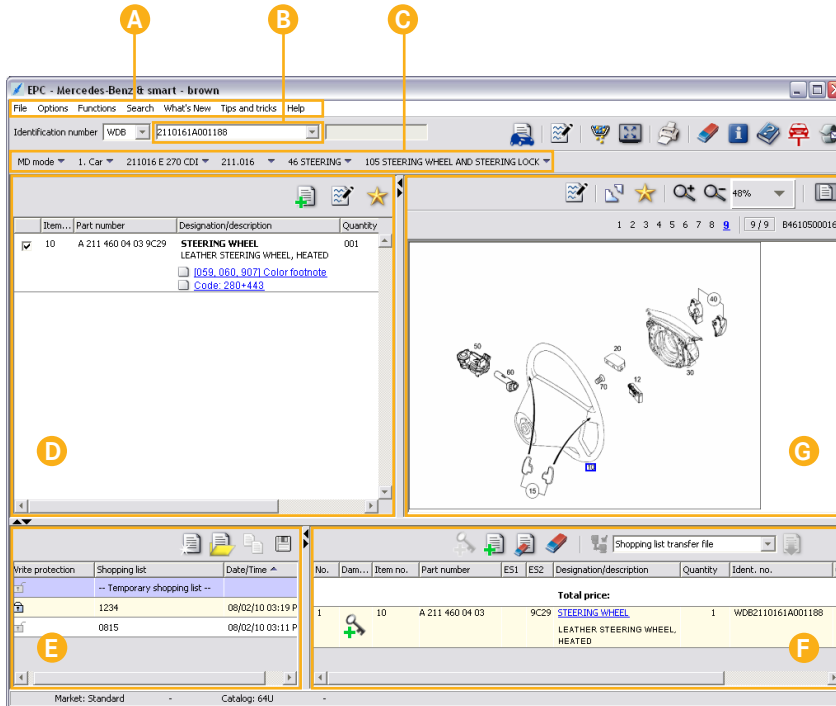
Indispensable in practice

Electronic Parts Catalog

EPC assists you in defining your parts volumes up to the point where you enter the shopping lists into your accounting systems for the creation of cost estimates and invoices.

EPC contains passenger car and commercial vehicle parts literature from approximately 1962 and vehicle datacards from approximately 1978.

EPC user interface



All EPC functions are clearly arranged in a main window.

The main window is divided into the following sections:

- Menu bar
- Identification number input field/pulldown menu
- Pull-down menus
- Parts list
- List overview
- Shopping list
- Picture

EPC - Mercedes-Benz & smart - brown

File Options Functions Search What's New Tips and tricks Help

Identification number WDB 2110161A001188

MD mode 1. Car 211016 E 270 CDI 211.016 46 STEERING 105 STEERING WHEEL AND STEERING LOCK

Item... Part number Designation/description


✓	10	A 211 460 04 03 9C29	STEERING WHEEL LEATHER STEERING WHEEL, HEATED [059_060_907] Color footnote Code: 280+443
---	----	----------------------	---

Create/show/manage note for picture 9 / 9 B46105000161

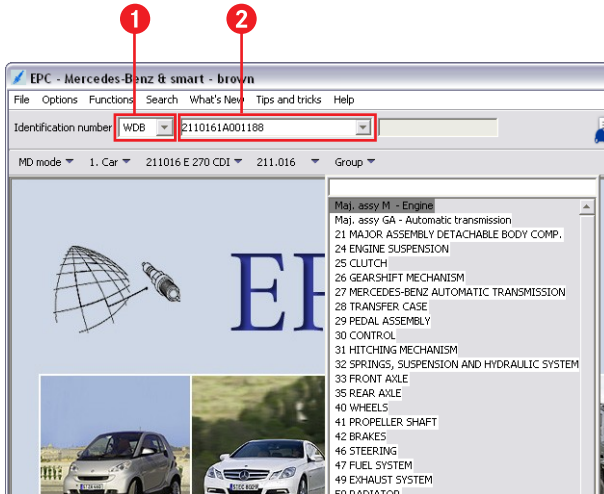
Shopping list transfer file

No.	Dam...	Item no.	Part number	E51	E52	Designation/description	Quantity
Total price:							
1		10	A 211 460 04 03		9C29	STEERING WHEEL LEATHER STEERING WHEEL, HEATED	3

Market: Standard - Catalog: 64U

- H The size of the individual areas can be altered as desired by clicking on the ***dividing lines*** and moving them either up/down or left/right.
- I The ***arrow icons*** can be used to show or hide the individual areas as desired.
- J Click on the ***icons*** provided in EPC in order to execute specific functions.
- K ***Tooltips*** are provided to explain icon functions. Hover the mouse pointer over an icon to reveal the tooltip with a brief description of the function.
- L If you have further questions that are not covered in this Brief Instructions, EPC also contains extensive ***Online help notes***. The Online help notes can be opened by clicking the  icon.

Getting started with EPC




Learn the basic functions of EPC by working through the example below.

Task:

You are looking for the part number for a new **steering wheel**.

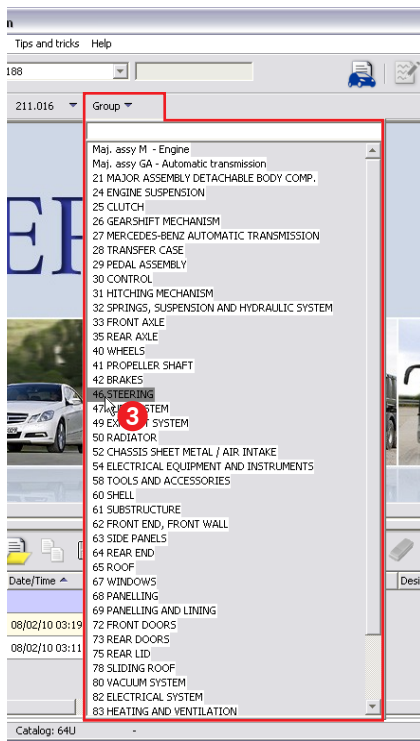
First you have to determine the vehicle data.

Determine vehicle data

- 1 Select the World Manufacturer Code **WDB** for Germany from the pull-down menu.
- 2 Enter the vehicle identification number **2110161A001188** in the input field and confirm by pressing RETURN .

If you have a vehicle identification number, you should always enter the entire vehicle identification number into EPC; in this way, the vehicle datacard will then be evaluated as well, thereby greatly simplifying parts identification.

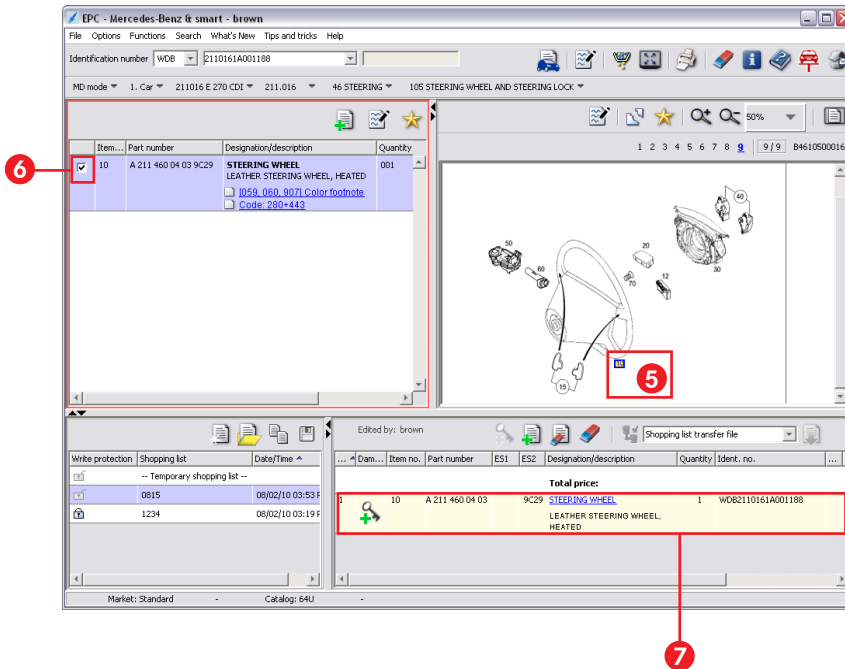
→ The vehicle data are determined and the "Group" pull-down menu will open.



Now you must determine the group and the subgroup.

Determine group

- 3 Select group **46 Steering** from the "Group" pull-down menu.
 - 4 Select subgroup **105 Steering wheel and steering wheel lock** from the "Subgroup" pull-down menu.
- The picture and the parts list will be shown.



All the part numbers of the whole sub-group are displayed in the parts list, even if the subgroup is spread across several pictures. Clicking individual item numbers in the picture causes only the selected items to be shown in the parts list.

Activate part number

- 5 Click the item number **10 Steering wheel** in the picture.
- ➔ Only the part numbers for this item number will be shown in the parts list.
- 6 Activate the part number in the parts list by checking the option button ☒.
- 7 The part number is transferred to the shopping list.
- ➔ You have identified the part number for a new steering wheel.

EPC - Mercedes-Benz & smart - brown

File Options Functions Search What's New Tips and tricks Help

Identification number WDB 2110161A001188

MD mode 1. Car 211016 E 270 CDI 211.016 46 STEERING 105 STEERING WHEEL AND STEERING LOCK

Item... Part number Designation/description Quantity

10	A 211 460 04 03 9C29	STEERING WHEEL LEATHER STEERING WHEEL, HEATED	001
----	----------------------	--	-----

1059_060_9071 Color footnote
Code: 280+443

Edited by: brown

Write protection Shopping list Date/Time

0815	08/02/10 03:53 F
1234	08/02/10 03:19 F

Market: Standard Catalog: 64U

Datacard

EPC

Identification number: WDB4374651V211940 0

Chassis

- Engine
- Transmission
- Front axle 1
- Rear axle 1
- Sk numbers
- Info text
- Other

Sales designation: U 5000 DINO 850

Order number: 3 8 513 90001

Delivery date: 30 10 2006

Paint code 1: 6431

Paint code 2: 6431

Engine no.: 624916.00.612253

Transmission: 219841.00.082725

Steering: 0017380608

Front axle 1: 737221.01.080571


Rear axle 1: 747221.01.080570

SA code	A30	A31	A98	A99	B42	B86	D79	E60
	E73	E98	G28	G48	G50	L35	M00	M37
	M46	M89	N18	Q11	W63	W67	X19	Z01
	Z16	Z22	Z99	3M1	6431	6431		

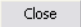
Close

Several part numbers contain additional information. The following information must be taken into account for proper part number selection:

- Information from the **Datacard**
- **Code information** (passenger cars)
SA/component information (commercial vehicles)
Construction kit information (buses)
- **Footnotes** must be evaluated

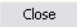
A Click the  icon to show the **datacard**.

In order to ensure exact parts identification, the information from the datacard must be taken into account.

Close the datacard by clicking the  button.

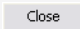
B Click the  [Code: 280+443](#) link to show the **"code information"**.

The "Code information" window contains the text description of the code or code character string.

Close the "Code information" window by clicking the  button.

C Click the  [1059_060_9071 Color footnote](#) link to show the **footnote**.


Footnotes contain important information that must be taken into account when selecting parts (e.g. ES1 code, ES2 code, ident. end numbers, etc.).

Close the "footnote" by clicking the  button.

D In the current example the **ES2 code** is displayed directly behind the part number.

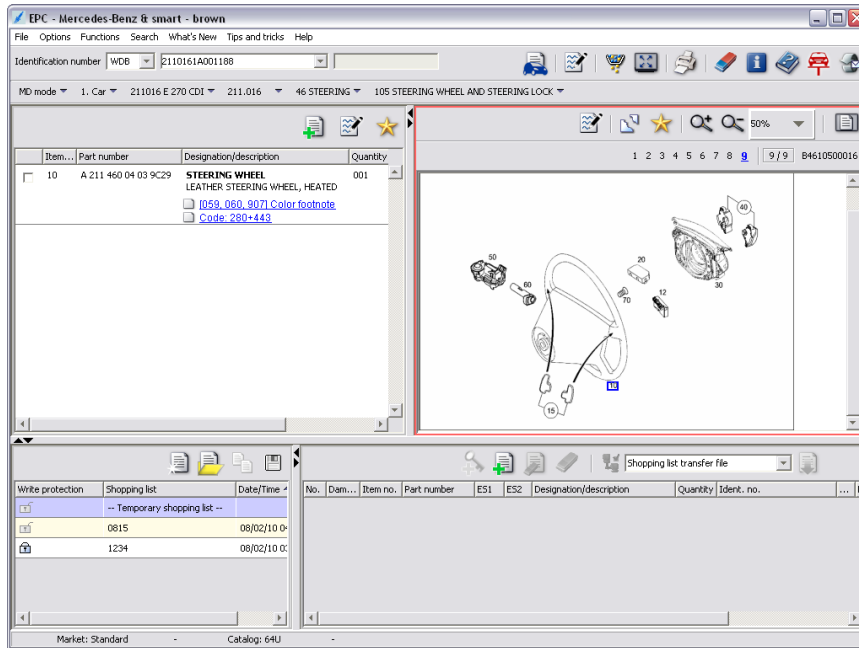
This may not be the case for other vehicle models.

If not, the evaluation of the ES2 code must be carried out manually using the footnote.

E The  icon can be used to **print** individual areas of EPC (parts list, picture and shopping list).

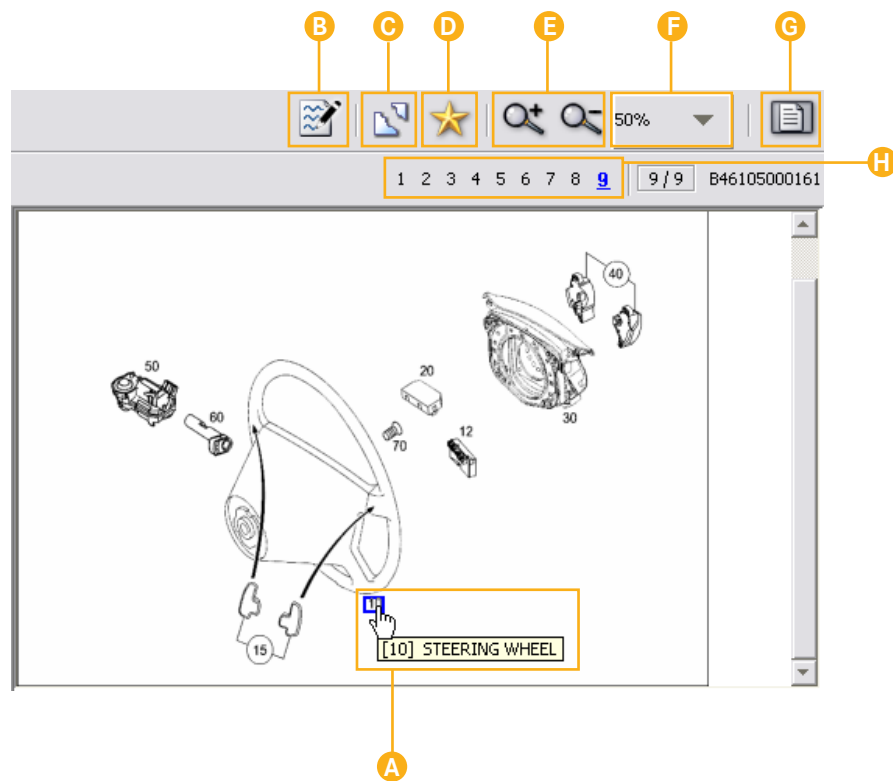
F Click the pull-down menu to open the **"history"**. The last vehicle data you entered in the EPC and WIS/ASRA are stored there.

Important functions in the picture window







The picture contains illustrations of parts along with mouse-sensitive item numbers.


Clicking one or more item numbers causes the associated part numbers to be shown in the parts list.

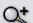
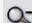


A **Click on item number**
The item numbers in the pictures are hot spots. Clicking one or more item numbers causes the associated part numbers to be shown in the parts list.


B **Create/show/manage note for picture**
The  icon can be used to create, show, delete and print notes for pictures.
The  icon indicates that there is a note for the picture.


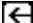
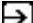


C **Tear-off**
The  icon shows the picture in a separate window.
The separate window can be closed by clicking once on the  icon.

D **Deselect all item numbers**
The  icon deactivates all selected item numbers in the picture. Also, all the part numbers of the whole subgroup are displayed in the parts list, even if the subgroup is spread across several pictures.

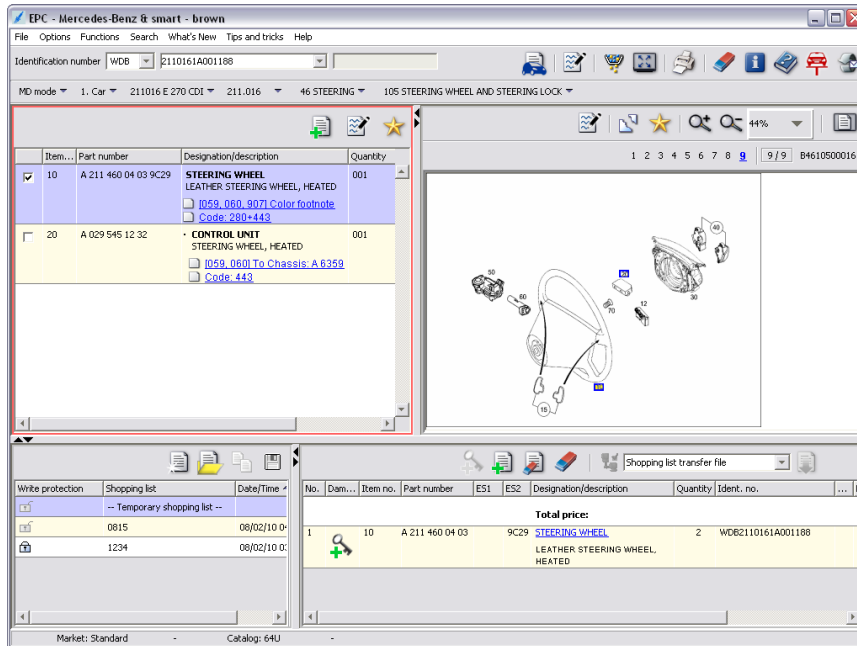
E **Zoom in/Zoom out**
The  and  icons incrementally enlarge and/or reduce the picture.

F **Select zoom level**
You can click on a zoom level via the "Select zoom level" pull-down menu. The picture will be displayed in the corresponding size.

G **Fit picture to window**
You can click the  icon to set the zoom level so that the complete picture fits into the picture window.

H **Navigate between pictures**
A group usually contains multiple subgroups. Each subgroup contains one or more pictures. The pictures are numbered consecutively from beginning to end . You can change to a specific picture by clicking a number or by using the  and  keys on the keyboard.
If there are more than 10 pictures, you can scroll through them in groups of ten using the arrow icons  and .

Important functions in the parts list



Parts identification occurs in the parts list. You can activate the option buttons ☒ to transfer the part numbers to the shopping list.

Many part numbers contain additional useful information. The following information must be taken into account to ensure that you have selected the correct part number:

- **Code information** (passenger cars),
SA/component information (commercial vehicles),
Construction kit information (buses).
- **Footnotes**

EPC - Mercedes-Benz & smart - brown

File Options Functions Search What's New Tips and tricks Help

Identification number WDB 2110161A001188

MD mode 1. Car 211016 E 270 CDI 211.016 46 STEERING 105 STEERING WHEEL AND


Table:

	Item...	Part number	Designation/description	Quantity
<input checked="" type="checkbox"/>	10	A 211 460 04 03 9C29	STEERING WHEEL LEATHER STEERING WHEEL, HEATED <input type="checkbox"/> [059, 060, 907] Color footnote <input type="checkbox"/> Code: 280+443	001
<input type="checkbox"/>	20	A 029 545 12 32	CONTROL UNIT STEERING WHEEL, HEATED <input type="checkbox"/> [059, 060] To Chassis: A 6359 <input type="checkbox"/> Code: 443	001


Annotations:

- A:** Points to the "Code: 280+443" link in the first row.
- B:** Points to the "Code: 443" link in the second row.
- C:** Points to the "Quantity" column header.
- D:** Points to the selection checkbox in the first row.
- E:** Points to the "Add" icon (green plus).
- F:** Points to the "Edit" icon (blue wavy line and pencil).
- G:** Points to the "Star" icon (yellow star).

Image: A small technical drawing of a steering wheel component, labeled with the number 50.

A Clicking the  [Code: 280+443](#) link displays the exact description of the Code, SA/component or Construction kit information. Here, a distinction is made between:

- **Code information** (passenger cars)
- **SA/component information** (commercial vehicles)
- **Construction kit information** (buses)

B Clicking the  [\[059, 060, 907\] Color footnote](#) link displays the **footnote**.

Footnotes contain important information that must be taken into account when selecting parts.


If the width of the "Designation/description" column is large enough to display the complete text, the footnote will be shown in full.


C The columns are separated by a **movable dividing line**.


D Selecting the option button ☒ automatically **transfers** the part number to the shopping list.


Deselecting the option button ☐ **removes** the part number from the shopping list.

If you want to transfer the part number to a particular shopping list which had already been saved previously, it is important that you select this shopping list before actually activating the option button.

E Using the  icon, you can **add** a selected **part number** to the shopping list. You can add the ES1 and ES2 codes, the quantity, the description, and the warranty/goodwill code to the part number as required.

F The  icon can be used to create, show, delete and print **notes for part numbers**.

If a note has already been entered for a part number, it will be displayed directly under the part number as a link  [Note](#).

G The  icon can be used to show **all part numbers** of the whole subgroup in the parts list, even if the subgroup is split into several pictures.

Important functions in the shopping list

The screenshot displays the EPC (Electronic Parts Catalog) software for Mercedes-Benz. The main window shows a list of parts for a 211016 E 270 CDI. The parts list includes:

Item	Part number	Designation/description	Quantity
10	A 211 460 04 03 9C29	STEERING WHEEL LEATHER STEERING WHEEL, HEATED ID59_060_9071 Color footnote Code: 280+443	001
12	A 036 545 70 32	CONTROL UNIT CONVERTER	001
20	A 029 545 12 32	CONTROL UNIT STEERING WHEEL, HEATED ID59_060 To Chassis A 6359 Code: 443	001
30	A 211 860 05 02 9B51	AIR BAG LEATHER STEERING WHEEL, HEATED ID59_060_9281 Color footnote Code: 443	001

To the right of the parts list is a technical diagram of a steering wheel assembly with numbered callouts (10, 12, 20, 30) corresponding to the parts in the list.

At the bottom, there is a 'Shopping list' window. It contains a table with the following data:

No.	Dam...	Item...	Part number	ES1	ES2	Designation/description	Quantity	Ident. no.
1			A 211 460 04 03 9C29			STEERING WHEEL LEATHER STEERING WHEEL, HEATED	1	W062110161A001188
6			A 029 545 12 32			CONTROL UNIT STEERING WHEEL, HEATED	1	W062110161A001188
7			A 126 990 03 12			SCREW W HEXAGON SOCKET STEERING WHEEL ON JACKET TUBEM16	1	W062110161A001188

The 'Total price:' section is also visible in the shopping list window.

The "Shopping list" is a list of those parts/parts kits selected in the parts list.

The contents of the current shopping list are available to your DMS (Dealer Management System).

ABCD

Edited by: brown





Shopping list transfer file

No.	Dam...	Item no.	Part number	ES1	ES2	Designation/description	Quantity	Ident. no.	...	Price	Warranty/goodwill cor
Total price:										€913.24	
9		11	A 000 989 03 15	14		BATTERY ACID BOTTLE SET TO 003 541 43 01	1	WDB107041		€20.09	
10		10	A 211 460 04 03		9C29	STEERING WHEEL LEATHER STEERING WHEEL, HEATED	1	WDB2110161A001188		€588.97	KW
11		30	A 211 860 05 02		9B51	AIR BAG LEATHER STEERING WHEEL.	1	WDB2110161A001188		€304.18	

-
Catalog: 64U
-

FGJHE

I

- A** The icon  makes it possible to change to the SSL (damage code list) module of the WIS/ASRA application. In the SSL module, the damage code for the warranty and goodwill case can be determined.
- B** Using the  icon, you can **add** a known **part number** manually to the shopping list. You can add the ES1 and ES2 codes, the quantity, the description, and the warranty/goodwill code to the part number as required.
- C** Using the  icon, you can **remove** a selected **part number** from the shopping list.
- D** Clicking the  icon **removes all part numbers** from the shopping list.
- E** The **quantity** transferred from the parts list depends on the vehicle's as-built configuration. If you need more or fewer units, you can click in the "Quantity" column and overwrite the quantity as required.
- F** The **ES1 code** (supplementary code 1) is mandatory for quantity/length specifications, package sizes and changeable parts. By clicking the "ES1" input field, you can enter a 2-character ES1 code as required.

- G** The **ES2 code** (supplementary code 2) is mandatory when ordering parts that depend on color or the equipment installed in the vehicle. By clicking the "ES2" input field, you can enter a 4-character ES2 code as required.

- H** You can enter an individual **remark** by clicking underneath the part designation.

The entered remark is not transferred to the DMS.

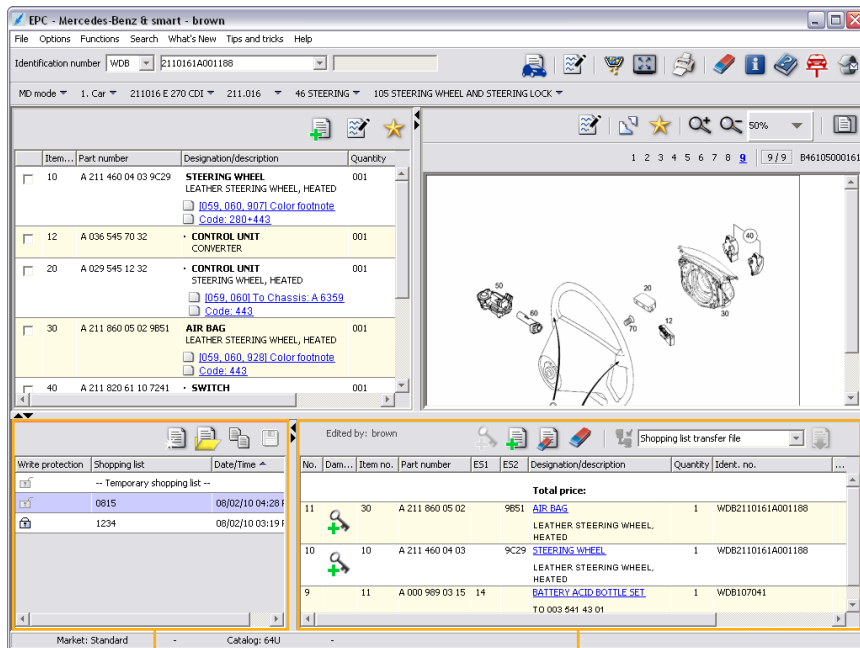
- I** You can enter a **warranty/goodwill code** to a part number as required.

The warranty/goodwill codes you enter can be useful when handling large amounts of data but they are not passed on to the DMS.

- J** The part designation is shown as a mouse-sensitive **blue link** in the shopping list. Clicking on the link shows the **part context**.

The part context includes the following information:

- The vehicle data used to determine the part number (model designation or vehicle identification number).
- The group/subgroup to which the part number is assigned.
- The picture and the parts list in which the item number was selected.



A

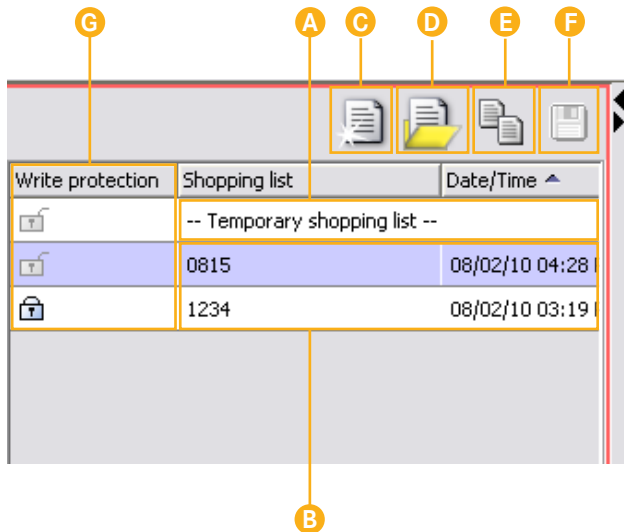
B

Managing shopping lists

The "List overview" helps you to manage your shopping lists. This means that multiple shopping lists can be used at the same time.

A distinction is made between the "**Temporary shopping list**" and **saved shopping lists**.

Click the "Temporary shopping list" or a saved shopping list to show its contents in the "**shopping list**" window.



A A "**Temporary shopping list**" always runs in the background during parts identification. If no saved shopping list is selected prior to the selection of a part number ☒ , the selected part numbers will be automatically transferred to the "Temporary shopping list."

B **Saved shopping lists** are shown in the list overview with the list name that you have entered.

C The icon creates a **new, empty shopping list**.

D To avoid unwanted clutter and to keep your list well organized, you can manage and administer your shopping list by simply clicking on the icon.

The "**Shopping list manager**" window is used to create, show, delete and print shopping lists.

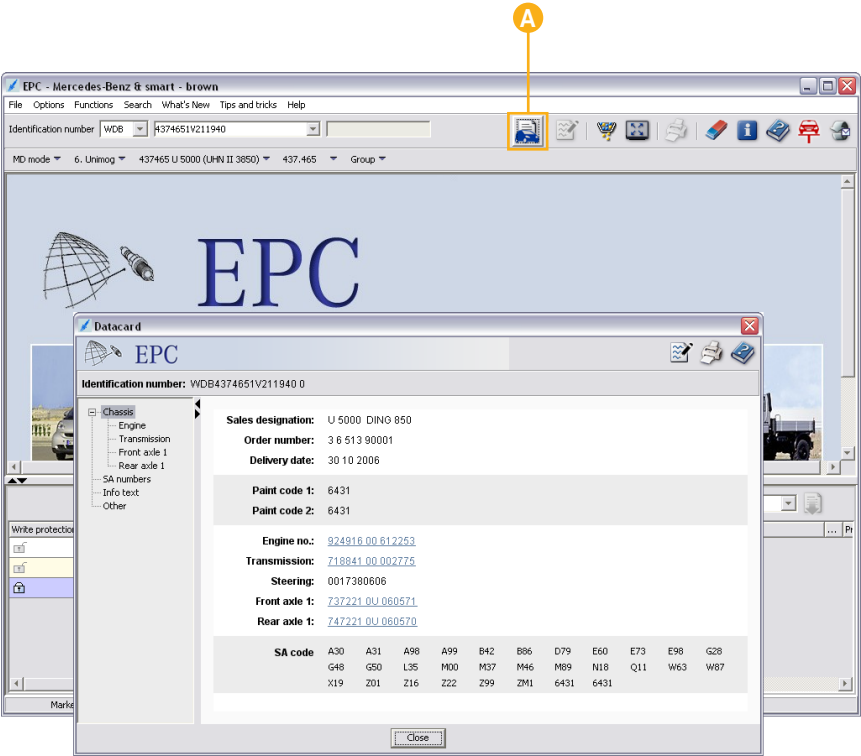
E The icon enables you to **copy the selected shopping list**.

F The icon allows you to save the selected shopping list. The shopping list must contain part numbers in order for it to be saved.

G A shopping list can be saved **without write protection** or **with write protection** .

It is not possible to delete a shopping list that has been write protected, nor is it possible to add or remove part numbers from write-protected lists.

Datacard



A Information from the **datacard** is required for the correct parts identification (e.g. for checking footnotes, validities, codes, SAs, construction kits, etc.).

The condition is entry via a complete vehicle identification number and the **existence of the datacard** in the system.

Datacard

EPC

Identification number: WDB4374651V211940 0

Chassis

- Engine
- Transmission
- Front axle 1
- Rear axle 1
- SA numbers
- Info text
- Other

Sales designation: U 5000 DING 850

Order number: 3 6 513 90001

Delivery date: 30 10 2006

Paint code 1: 6431

Paint code 2: 6431

Engine no.: 924916 00 612253

Transmission: 718841 00 002775

Steering: 0017380606

Front axle 1: 737221 0U 060571

Rear axle 1: 747221 0U 060570

SA numbers

Filter 03

Group 03

03 505006/14	03 505007/22
03 505009/18	03 505029/04
03 505040/19	03 505041/05
03 505073/13	03 505089/03

code

A30	A31	A98	A99	B42	B86	D79	E60	E73	E98	G28
G48	G50	L35	M00	M37	M46	M89	N18	Q11	W63	W87
X19	Z01	Z16	Z22	Z99	ZM1	6431	6431			

Info text

Filter [motor]


UHU-INFORMATION ZUR UHU-NR.: 4/1011 UHU20
XX
UHU2004/1011

II *** Abweichende technische Ausführung ***

ECONIC 2628 L/VLA - BM 957.654

- * KCUX Ueberhangverkuerzung (1200mm --> 650)
- * KEAS Batteriehaupthschalter manuell
- * KHVA Standheizung Hydronic 10
- * KJAG Tachographentauch, (Kienzle anstelle
- * KLME Leseleuchte ueber Beifahrersitz
- * KMP3 Unterfahrschutz K'hler bis **Motoc** anal
- * KSAJ Mittelsitz (bei FH7 incl. Fussraste)
- * KSAK Sportsraef Aussensitz inkl. Fussraste

Close

Following entry of the identification number, the datacard can be shown with the icon .

B ***Tree structure***



Navigation within the datacard takes place by means of a tree structure. The entries in the tree structure depend on the particular vehicle selection.

C ***Data sector***


The data contents selected in the tree structure are shown in the data sector.

D If additional information exists on a major assembly, then it is shown as a ***link***. The data information is displayed by clicking on the link.

E ***Write note***

Notes on the datacard can be created, displayed, deleted and printed. If a note is already stored for a datacard, this is shown with a colored border around the Note icon  or in the EPC main window with a colored border around the datacard .

F ***Print***

The icon  opens the „Print datacard“ window in which the printing scope can be specified.

G ***Online help***

The icon  opens the Online help for the EPC.

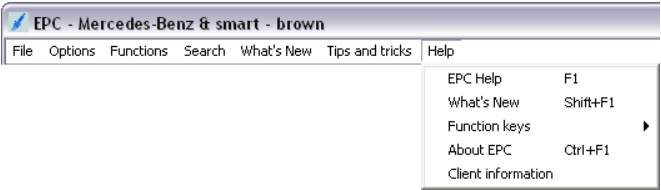
H ***"SA number" filter***

SA numbers can be searched for or filtered directly with an input field.

I ***„Info text“***

Info texts are only displayed if info texts are stored in VeDoc. The text can be searched for terms and numbers with an input field.

Menu bar



The menu bar contains submenus that allow you to open additional functions in EPC.

Menu		Keyboard shortcut
File	Print	Ctrl+P
	Exit	Alt+F4
Options	Setup	F2
	Filter	F7



Function
Opens a window in which you can stipulate the print area (picture, parts list, shopping list).
This closes the EPC program.
In Setup you can configure the basic settings for your User ID.
The filter settings for the data filter can be viewed and changed as required here.

Menu			↓	Function
Functions	Add part number	Ctrl+F9		Allows you to manually add a known part number to the shopping list.
	Datacard	Ctrl+F6		You can call up the datacard by entering an identification number.
	Footnote	Ctrl+F2		By selecting a part number that contains a footnote, the footnote is displayed. Footnotes contain important information that must be taken into account when selecting parts.
	Note	Shift+F2		Following the selection of a part number or a picture, a user has the option to create, show and manage one or more notes.
	Manually select catalog	Ctrl+F5		The function for automatic catalog selection is dependent on the model series. In isolated cases, it may be necessary to select a catalog other than the one identified by the system. The catalog selection can be changed manually in this case.
Search	Code/SA/components	Shift+F8		In the „Code/SA/Component search“ window, you can search for the designation of codes, code character strings, or SAs/components.
	SA	F10		You can call up an SA directly by entering an SA/component number.
	Part	F11		You can search for part numbers or for model designations in the "Search" window.

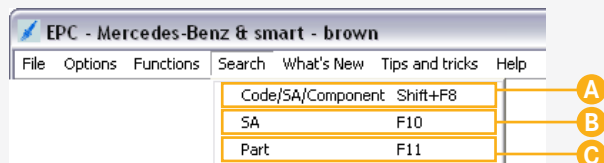


<i>Menu</i>		<i>Keyboard shortcut</i>
<i>What's New</i>	<i>What's New</i>	<i>Shift+F1</i>
<i>Tips and Tricks</i>	<i>Tips and Tricks</i>	
<i>Help</i>	<i>EPC Help</i>	<i>F1</i>
	<i>Function keys</i>	
	<i>About EPC</i>	<i>Ctrl+F1</i>
	<i>Client Information</i>	



<i>Function</i>
"What's New" delivers news directly to EPC users and contains information on new functions, technical information and software modifications. Always read the latest issue of "What's New" after every update.
Shows a „Tip of the Day“.
Opens the welcome page of the Online help notes.
Shows the EPC functions for important function keys and key combinations. Function keys which can be used at the moment are shown in black. Function keys which cannot be used at the moment are shown in light gray.
Shows you the EPC release and data status.
Shows data of the system configuration of the local client important for the EPC.

Search



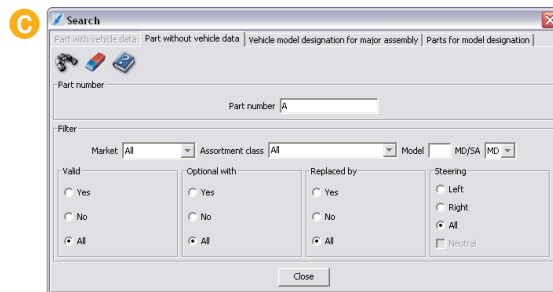
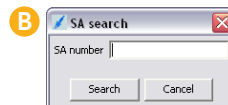
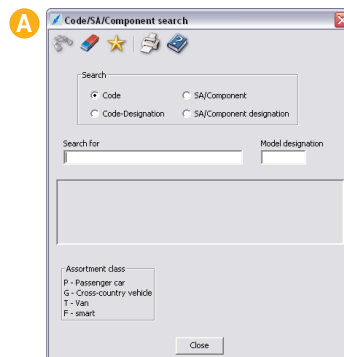
The following search options are available in EPC:

A Code/SA/Component
You can search for the description of codes, SAs and components in the "Code/SA/Component search" window.

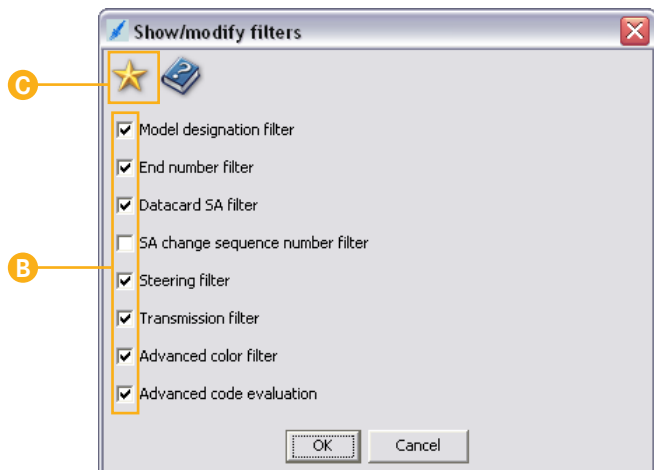
B SA
By entering an SA/component, the SA is shown with its change sequence number.

C Part
In the „Search“ window you can search for part numbers, vehicle model designations or for parts for the model designation.


The EPC Online help notes provide detailed information on the "Search" function.



Filter




The EPC filter settings are shown in the "Show/modify filters" window and can be changed as required.

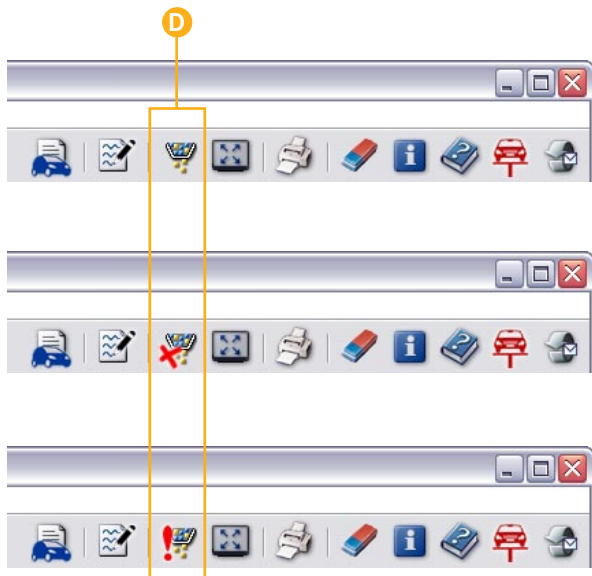
- A** The filter can be opened by clicking on the  icon or by pressing the F7 key.

Disable or change the filter in the following situations:

- If aftermarket installations have not been documented in VeDoc.
- If the user wishes to find retrofitting information, for example on parts that can be installed in the vehicle.

- B** Individual filters can be switched on or off using the option buttons.

- C** The  icon can be used to stipulate "No filters" or "Default filters."



D

The filter icon can be shown as follows depending on the filter settings:



The **default filter** is active.



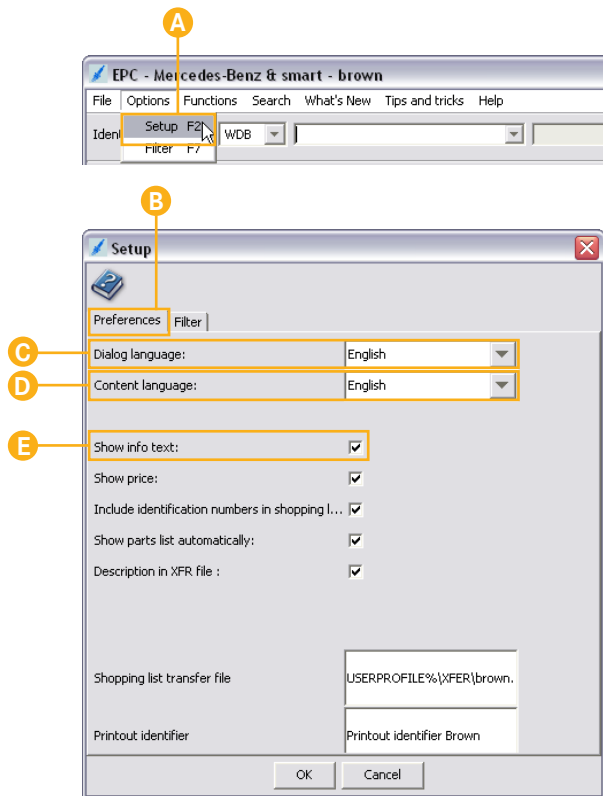
There are **no** active **filters**.



Individual filters have been **changed**.

All settings in the "Show filters" window are temporary. This means that the settings only apply to the active vehicle data. If parts identification is done for other vehicle data, the default filter will be activated automatically.

Setup, Write feedback



Setup

In "Setup" you can configure the basic settings for your User ID.

Open Setup window

Open Setup by going to "Options/Setup" in the menu bar or by pressing F2.

„Preferences“ panel

Dialog language

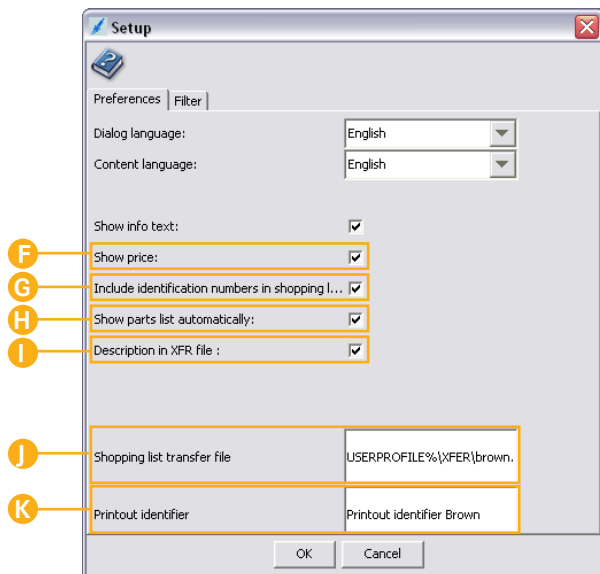
The "Dialog language" pull-down menu allows you to set the EPC interface language. This will change the language used for the buttons, panel tabs, Online help notes, etc.

Content language

The "Content language" pull-down menu allows you to set the EPC content language. This will change the language used for part designations, footnotes, SA codes, etc.

Show info text

Info texts or production orders may be present for a vehicle. The „Show info text“ option button is used to specify whether the info texts/production order are automatically displayed in the „Info text“ window directly following the entry of the identification number.



F Show price

Specifies whether the price for a part is displayed in the „Price“ column in the shopping list. So that the price can be displayed, a valid price file must be imported by the administrator of the EPC server.

G Include identification numbers in shopping list

Specifies whether the „Identification number“ column is displayed in the shopping list.

H Show parts list automatically

Specifies whether the parts list is automatically displayed and loaded from the EPC server after definition of the group/sub-group with the pull-down menus.

I Description in XFR file

Specifies whether the additional information of the part designation is output in the „XFR file“.

The local network administrator must be consulted before any changes are made.

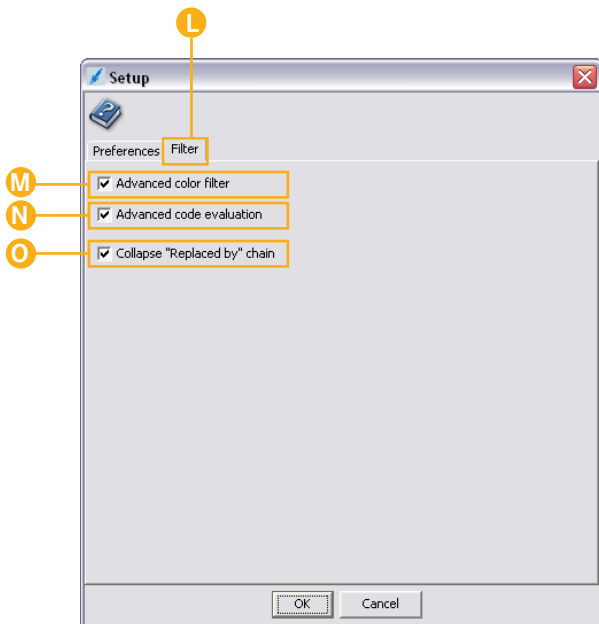
J Shopping list transfer file

With the XFR file, information can be transferred to the DMS (Dealer Management System).

The local network administrator must be consulted before any changes are made.

K Printout identifier

Enables the entry of a user-specific printout identifier. The text entered here is printed when printing out the picture and the shopping list.



L "Filter" panel

The filter settings can be adjusted in the „Filter“ window.

M Advanced color filter

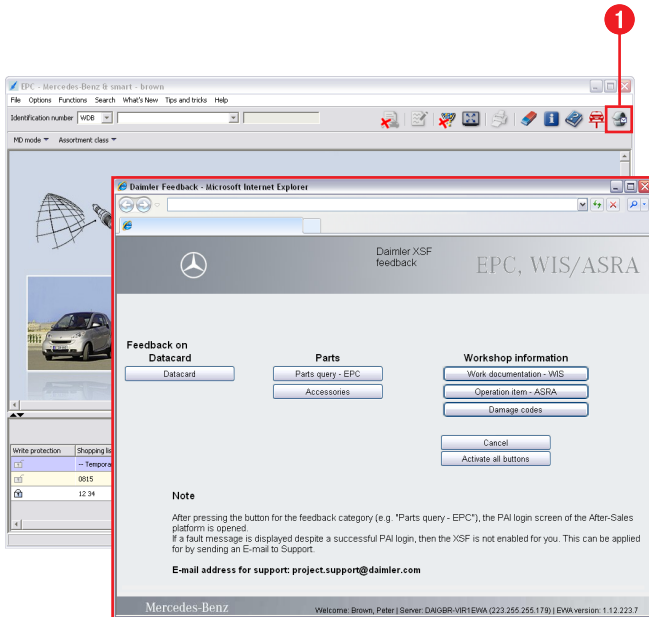
Specifies whether the „Advanced color filter“ is generally used when filtering the parts information in the parts list.

N Advanced code evaluation

Specifies whether the „Advanced code evaluation“ is generally used when filtering the parts information in the parts list.

O Collapse "Replaced by" chain


Specifies whether the „Replaced by:“ chain in the parts list is initially shown folded closed.
The „Replaced by:“ chain is displayed in the „Item number“ column of the parts list.



Write feedback

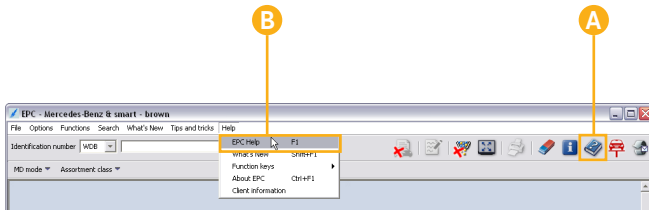
Have you discovered an error or do you have a suggestion for improving the application?

No problem, you can send a feedback message to the responsible office in just a few quick and simple steps.

- 1 In the application, the  icon is prominently positioned. Clicking this icon opens a feedback message screen, to which you can add a detailed description if necessary.

Depending on your basic settings, you can select an XSF, email or fax form. Your administrator defines the setting as to which form is displayed.

Online help, FAQ, "What's New", "Tips and Tricks"




Online help

The application includes an extensive **online help function** which supports you in all questions on operation. This function provides assistance, regardless of whether you need information on the function of an icon, would like to obtain detailed information or require **step-by-step instructions**.

You can open the Online help notes as follows:

A Help icon

In the Standard function bar, find the  icon. Clicking it takes you to **context sensitive** help, **e.g. about the current step**. You can navigate to additional Help topics using links or the navigation bar.

B Menu bar

When opening the Help notes from the menu bar or by pressing the function key F1, a **general help starting page** will appear. Here, you can choose between the various Help topics. You can navigate to additional Help topics using links or the navigation bar.

EPC -- Online Help

Help topics **Start search**

Welcome

- Parts identification - Step by step
- Main window**
 - Menu bar
 - Vehicle/major assembly identification
 - Toolbar
 - Picture
 - Parts list
 - Shopping list
 - Identify damage code for part number icon
 - Add part number to shopping list icon
 - Remove selected part number from shopping list
 - Delete all part numbers from shopping list
 - Change quantity
 - Add/delete remarks
 - Enter/delete warranty/goodwill code
 - Show part context
 - Add ES1 code
 - Add ES2 code
 - List overview
 - Picture/parts list dividing line
 - Use context menus
- Notes' window
- Setup' window
- Datacard
- Search
- Useful functions
- Keyboard operations

FAQ

Main window

Shopping list

The "Shopping list" is a list of those parts/parts kits selected in the parts list.
The contents of the current shopping list are available to the Dealer Management System (DMS).

The parts/parts kits displayed in the shopping list can be edited as needed:

- Click the column headings to sort the shopping list.
- Individual items or the entire list can be deleted again.
- Items can be added manually.
- It is possible to edit the quantity for each item.
- Comments can be entered and the Warranty/goodwill code can be edited.
- An ES1 code or an ES2 code can be added to the part number.
- A damage code can be identified for a part item.
- The context menu (c) can be accessed with the right mouse button to control important functions of the shopping list.

Detailed information can be accessed by clicking on one of the elements in the graphic.

No.	Dam...	Item no.	Part number	ES1	ES2	Designation/description	Quantity	Ident. no.	Qty ...
Total price:									
2		70	A 126 990 03 12			SCREW W HEXAGON SOCKET	1	WD82110161A001188	
						STEERING WHEEL ON JACKET			
						TUBES			
1		10	A 211 460 02 03	9C29		STEERING WHEEL	1	WD62	

Adjust column width

Context menu:

- Add part number to
- Remove selected p
- Copy part number
- Copy part number
- Print shopping list


C***Links in continuous text***

Links in continuous text are identified by a colored type. Clicking a link takes the user to a page containing more detailed information.

D***Reference links***

Reference links are identified with an arrow and a colored type. Clicking the arrow or the colored text takes the user to detailed information or additional information.

E***Links in overview graphics***

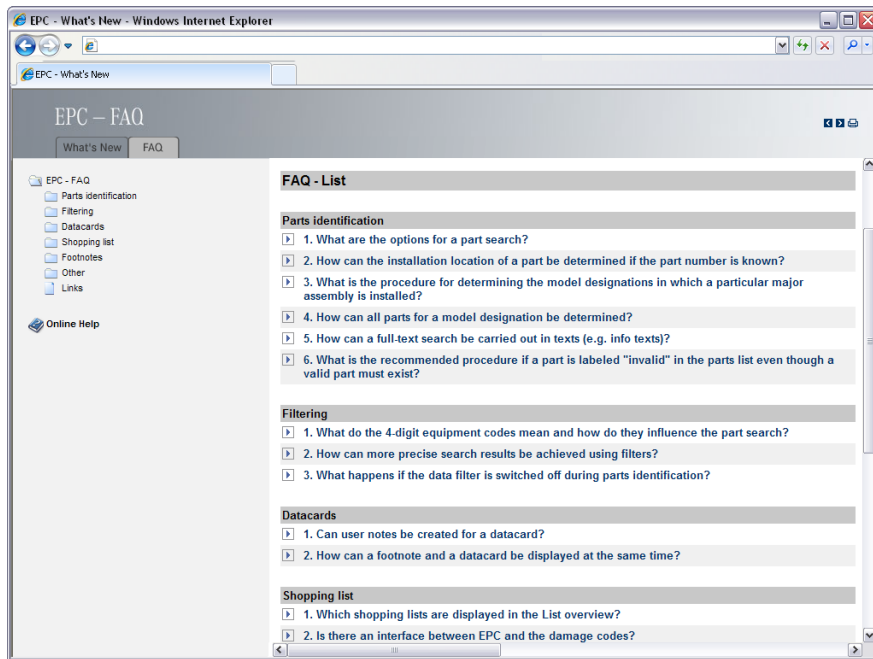
Most of the overview graphics in the Help notes are mouse-sensitive. The mouse pointer changes to a hand  when hovering over sensitive areas, which can then be clicked to access detailed information.

F***Navigation bar***

All Help topics are also included as entries in the navigation bar.

G***"Start search" panel***

To search for a search term within Online help, go to the "Start search" panel.



FAQ - Frequently Asked Questions

This document contains a summary of the most frequently asked questions on the operation of the EPC.

Click the link to display the corresponding answer.

- A** **"What's New "**
- "What's New" enables the flow of information directly to the EPC user and contains information on
- New functions
 - Tips and tricks
 - Technical information, e. g. design group modifications.

„What's New“ is always displayed once for the EPC user when the EPC is started following an update.

Then this information can be displayed if necessary at any time with the "Help/What's New" menu bar.

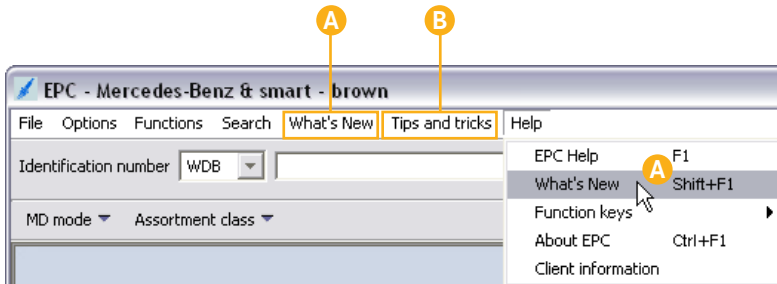
B **"Tips und tricks"**

The „Tip of the Day“ window enables the display of a note on the operation of a certain EPC function each time the EPC is started.

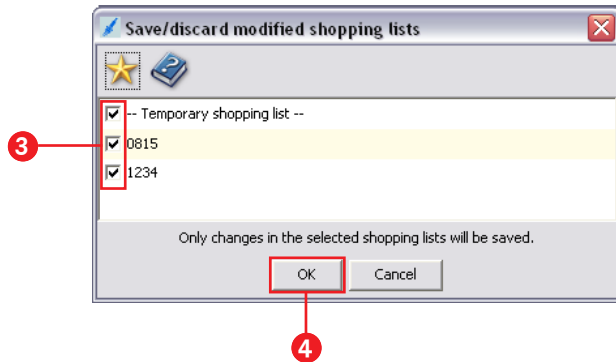
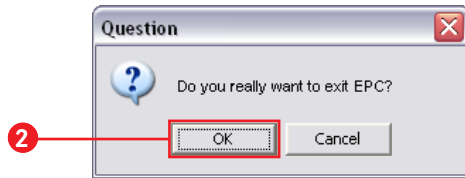
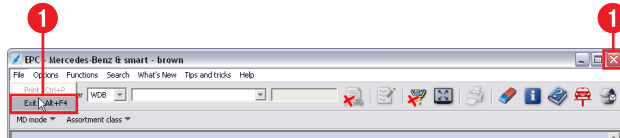
- C** Clicking on the link displays a detailed article on the respective topic.



The „Tip of the Day“ can always be displayed with the **Tips and Tricks** menu bar.




Exit EPC



On exiting EPC, the system checks if there are any unsaved shopping lists. If there are any unsaved shopping lists, a window appears in which you can select the shopping lists you want to save.

- 1 Select "File/Exit" in the menu bar.
- 2 Confirm the warning by clicking the button.
- 3 Activate the corresponding option buttons ☒ to save the shopping lists you wish to keep.

The  icon is a toggle used to activate or deactivate all option buttons.

- 4 Click on the button.
- Only the selected shopping lists will be saved, EPC will close.

